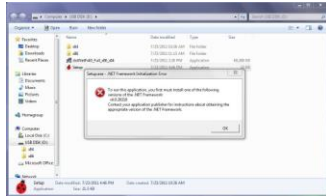


# Quick Start Card - Windows 7 only

V4.5 LBXXXXA Series USB PowerSensor+™

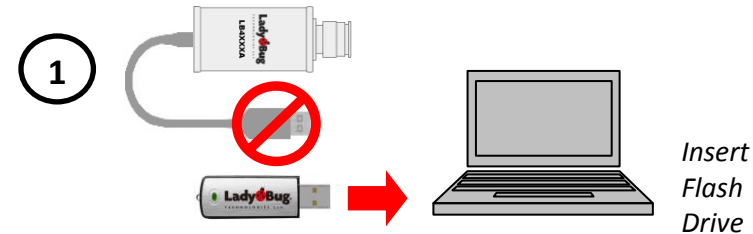
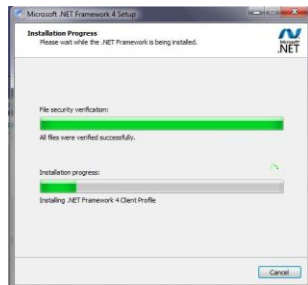
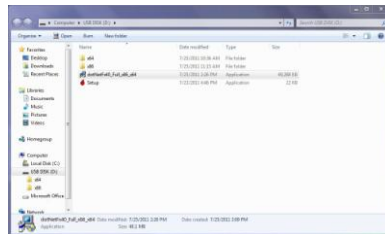
Power Meter and Pulse Profiling Applications Software Install

**NOTE: Installing .NET Framework 4.0 from the LB Flash Drive**

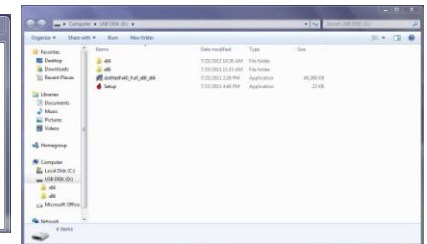


If this error appears, it means that the required .Net 4.0 Framework is not installed on your computer. A full install of .NET 4.0 is available on your flash drive.

Run "dotNetFx40\_Full\_x86\_x64.exe" from the flash drive root directory. When .NET Setup window appears, select "Install". Select "Finish" when completed. Return to Step 2.

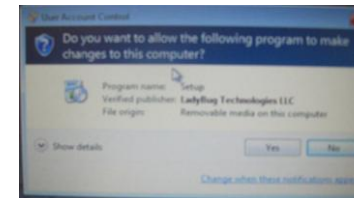


**2** Open folder, run Setup.exe from the root directory of the flash drive.



**Note: if a .NET framework error appears after running Setup.exe, go the last page for instructions.**

**3** Select "Yes" and "Next"



**4**

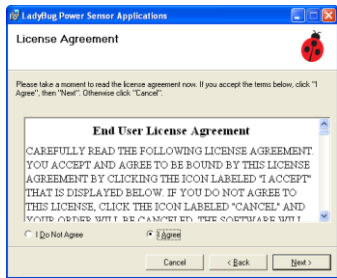


< Click Next



©LadyBug Technologies LLC 2005-2011  
[www.ladybug-tech.com](http://www.ladybug-tech.com)

5



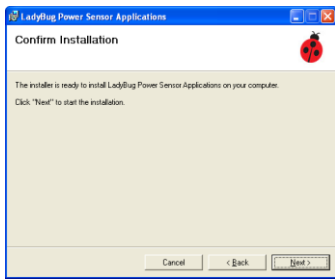
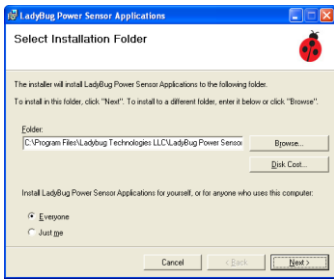
< Click Next

6



< Check Both PM & PPA for Pulse Profiling, Check only Power Meter App for non-Pulse Profile sensors  
< Check High Speed Logger and/or Sample Code if desired

7



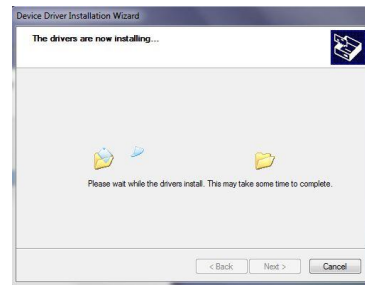
^ Click Next for both

8



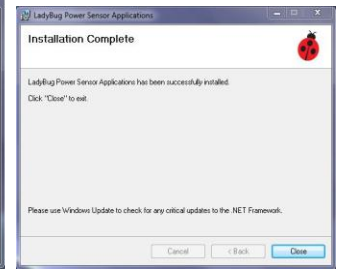
^ Click Next

9



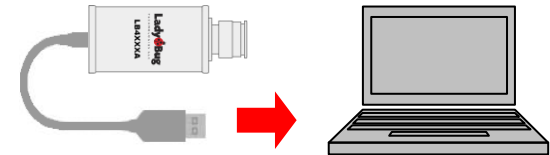
^ Select Install

10



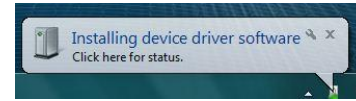
^ Select Finish, then Close

11



Connect Sensor

12



Installation Complete.  
Begin Making Power Measurements ...

